

Gradus Barrier Matting

A Practical Zoning Guide



GRADUS

Contents

- Zoning** - Designing Effective Entrances 3
- Zoning** - Why Does Zoning Matter? 3
- Zoning** - Where To Use Barrier Matting 4
- Zone 1** - Exterior Entrances & Access Points 5
- Zone 2** - Interior Entrances & Access Points 6
- Zone 3** - Interior Circulation Areas & Interior Entrances 7
- Zone 4** - Other Internal Areas 8

Zoning - Gradus Barrier Matting

A Practical Zoning Guide

Designing Effective Entrances

A clean, safe and welcoming building doesn't start at the reception desk, it starts at the door. The moment someone crosses the threshold, your entrance system is already working hard. When correctly zoned, Gradus Barrier Matting removes dirt and moisture from foot and wheeled traffic at every stage of the entrance, protecting adjacent floorcoverings, reducing slip risks and lowering long-term maintenance costs.

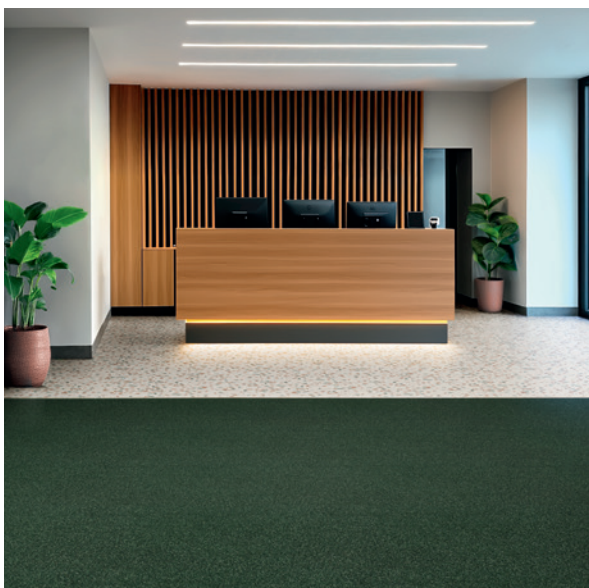
Zoning is what separates a mat that looks good for one day, from a system that performs for years. In this document, we break down the four core zones using real-world examples and terminology to help you specify with confidence.

Why Does Zoning Matter?

Every building behaves differently. A high-traffic hospital entrance has different matting requirements than a staff-only side door in a manufacturing plant. Zoning allows you to:

- Match scraper wiper and matting type to the level of foot and wheeled traffic.
- Improve appearance retention of surrounding floorcoverings.
- Reduce cleaning frequency and associated costs.
- Enhance safety by reducing slips, trips and falls from damp floorcoverings.

The most effective entrance designs use a combination of Gradus matting types, across multiple zones, to create a seamless high-performance entrance system.



Zoning - Where To Use Barrier Matting

A Practical Zoning Guide

Zoning isn't a theoretical exercise, it's a practical strategy that directly impacts safety, maintenance budgets and the long-term performance of your floorcoverings.

When Gradus Barrier Matting is correctly specified across **Zones 1 - 4**, you create an entrance system that works with the building, not against it.

Zone 1 - Exterior Entrances and Access Points

Zone 2 - Interior Entrances and Access Points

Zone 3 - Interior Circulation Areas and Some Interior Entrances and Access Points

Zone 4 - Other Areas



Zone 1 - Exterior Entrances & Access Points

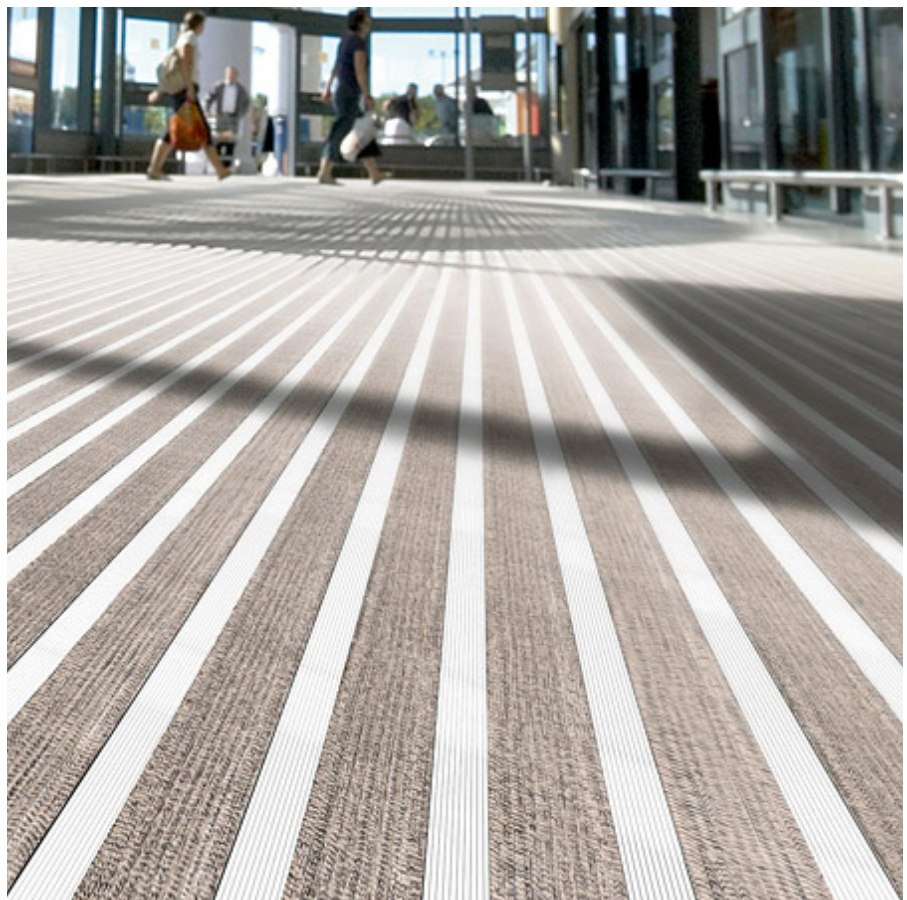
Stopping dirt before it enters the building

Zone 1 is your primary line of defence. This is where heavy-duty Primary Barrier Matting goes to work, using scraper wipers to remove dirt, grit and debris before it enters the building. It's essential for entrances exposed to high footfall, wheeled traffic or outdoor contaminants, protecting both interiors and maintenance budgets.

Available in open or closed construction and multiple gauges, **Zone 1** products should be recessed into a matwell frame.

Ideal Products

- Esplanade 9000
- Esplanade 8500
- Esplanade 6000
- Esplanade 5000
- Esplanade 1500
- Esplanade 1000
- Tyreguard



Real World Examples

A retail park in Handforth installed **Tyreguard** across main entrances. With thousands of daily visitors and trolleys tracking in grit, the heavy-duty scraper wipers removed the majority of debris before customers stepped inside.

The facilities management team reported that they were *'really pleased with the finished result and the Gradus team also did a great job.'*

Zone 2 - Interior Entrances & Access Points

Capturing moisture and finer particles inside the building

Zone 2 Once indoors, the focus shifts to moisture absorption. Primary and Hybrid Barrier Matting combine scraper and textile wipers to remove and retain dirt and moisture before they reach adjacent floorcoverings.

Available in open or closed construction and multiple gauges, **Zone 2** products can be recessed into a matwell frame or surface-mounted depending on the installation.

Ideal Products

- Esplanade 9000
- Esplanade 8500
- Esplanade 6000
- Esplanade 5000
- Esplanade 1500
- Esplanade 1000
- Topguard
- Tyreguard
- Mat-in-a-Box 6000 & 5000
- Mat-in-a-Box 1550
- Access 6000 & 5000



Real World Examples

A university in Chelmsford paired **Esplanade 6000** in the main lobby with **Access 6000** at a secondary staff entrance.

The combination delivered consistent performance across different traffic volumes and installation types, while maintaining a cohesive aesthetic.

Zone 3 - Interior Circulation Areas & Interior Entrances

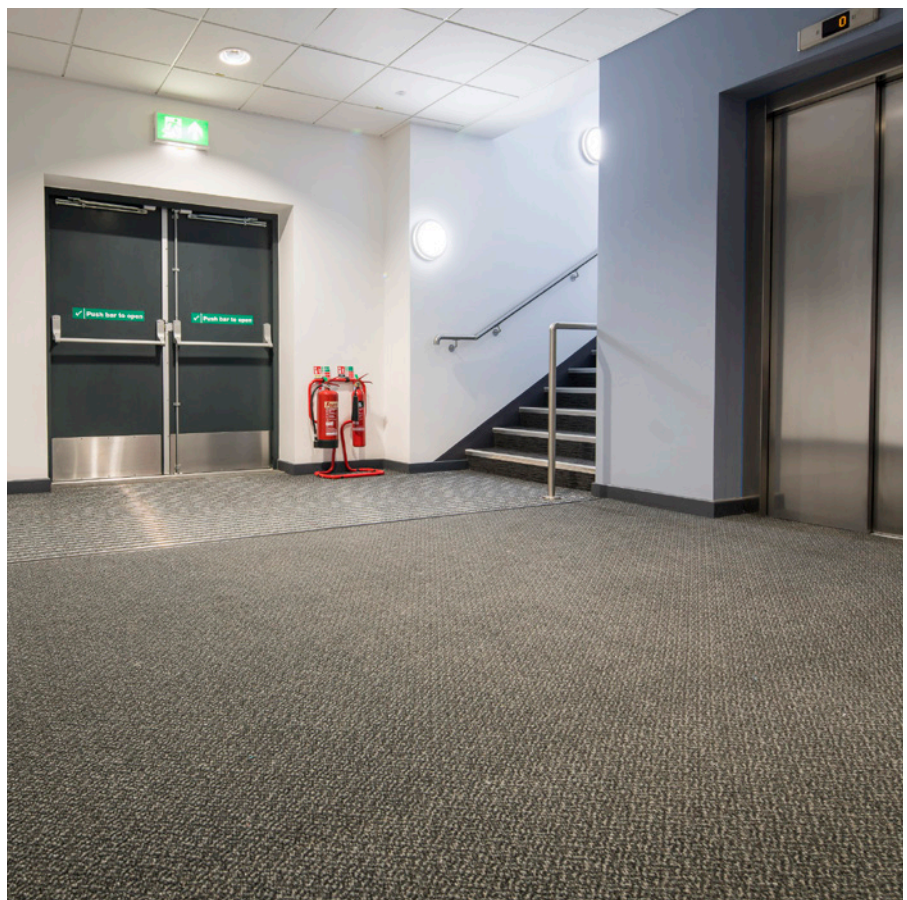
Protecting high-wear internal spaces

Zone 3 is where Secondary Barrier Matting becomes critical. It absorbs additional dirt and moisture not captured by matting in **Zones 1** and **2**, safeguarding adjacent floorcoverings in busy internal circulation areas.

This zone typically includes reception spaces, lift lobbies, staircases (excluding Boulevard Stripe and Boulevard 7000), and internal transition points such as factory-to-office entrances.

Ideal Products

- Boulevard Stripe
- Boulevard 7000
- Boulevard 6000
- Boulevard 5000
- Boulevard 1500



Real World Examples

A London depot installed **Boulevard 6000** as an extension to the Primary Barrier Matting at the main entrance, positioned adjacent to the lift lobby.

By extending the barrier system with **Boulevard 6000**, the depot strengthened first-point defence against tracked-in moisture and debris, helping maintain a cleaner, safer entrance space.

Zone 4 - Other Internal Areas

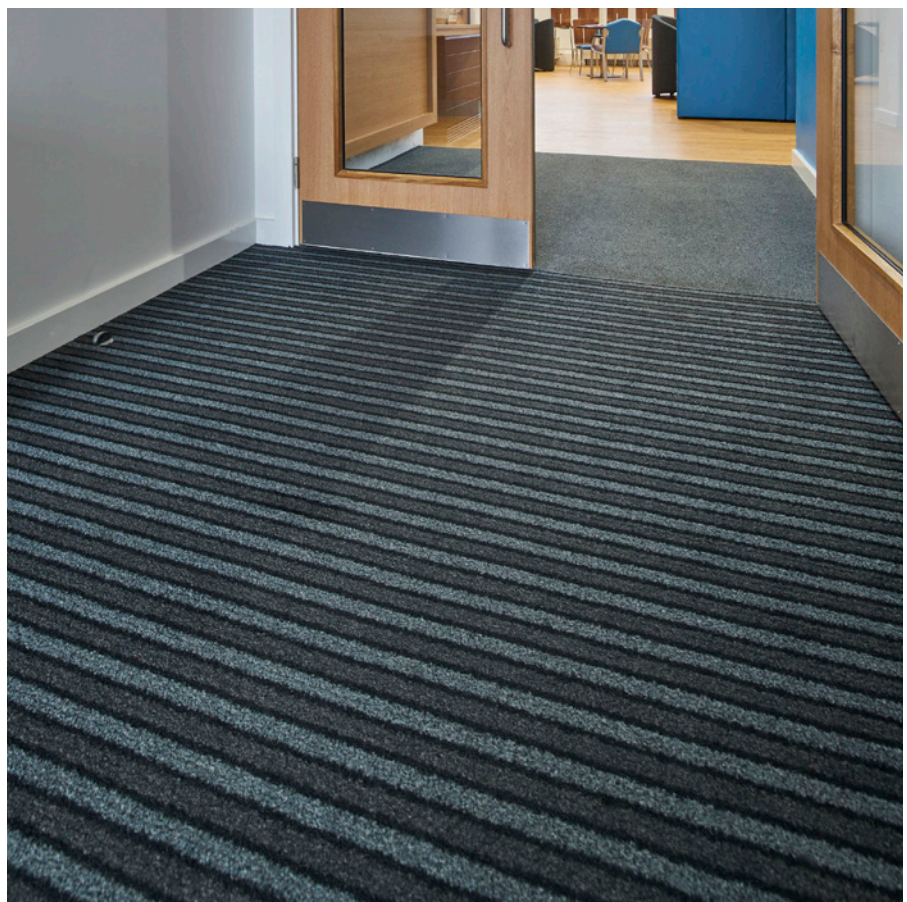
Managing spill risks and everyday soiling

Zone 4 covers busy internal areas where spillages, food debris and everyday soiling are common, including canteens, vending points, breakout spaces and informal meeting zones.

In these environments, Secondary Barrier Matting with high-performance fibres is essential, delivering the durability, cleanability and long-term appearance retention needed to cope with frequent footfall and increased contamination.

Ideal Products

- Boulevard Stripe
- Boulevard 7000
- Boulevard 6000
- Boulevard 5000
- Boulevard 1500



Real World Examples

A London hospital installed **Boulevard** at internal room entrances to manage relentless daily traffic.

Despite constant footfall, the dense fibres and robust wear warranty kept the matting looking fresh, even with intensive daily cleaning.